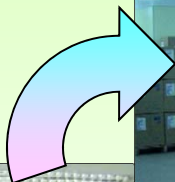
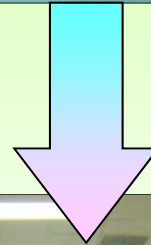


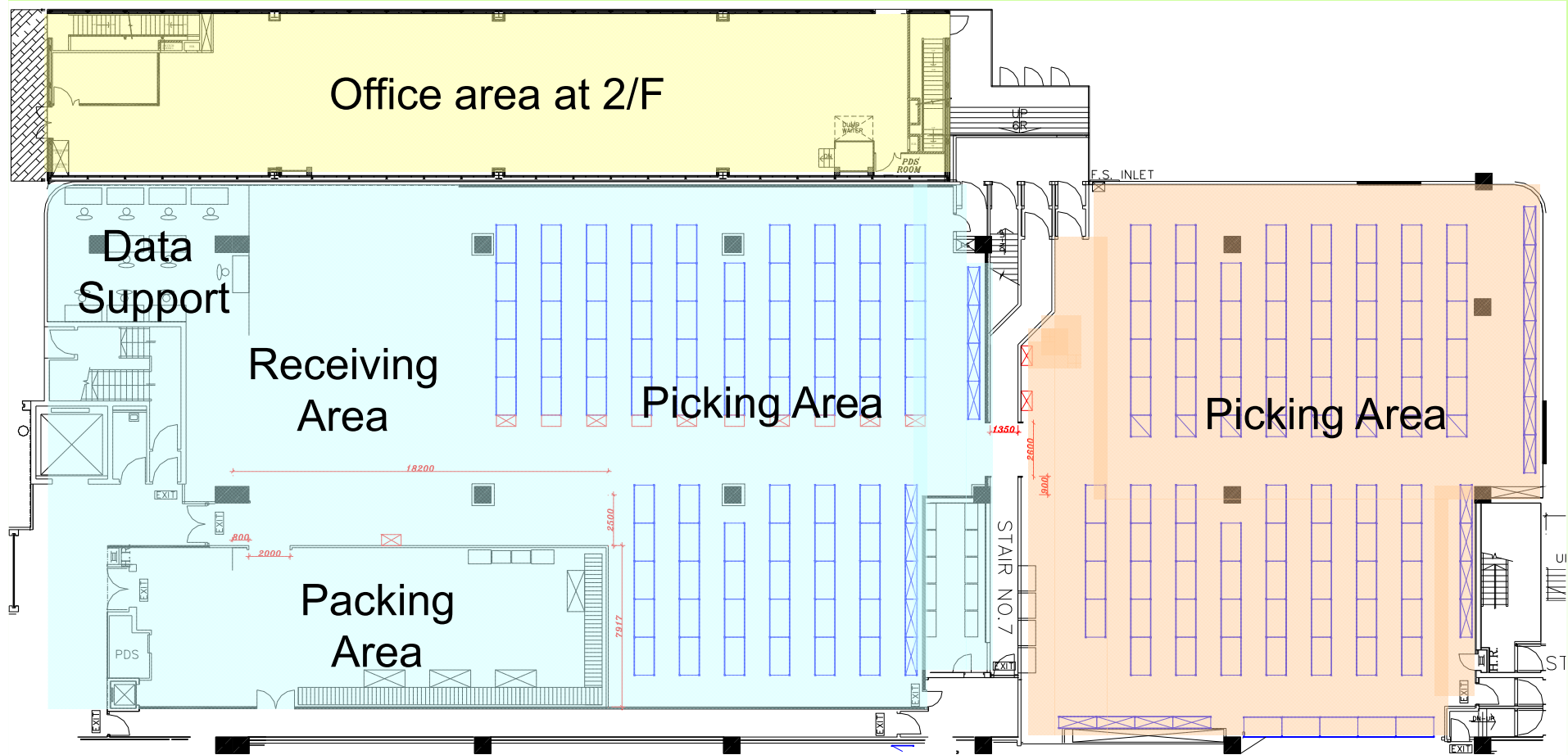
Motorola Semiconductors Hong Kong Limited Silicon Harbour Center - Asia Pacific Headquarters



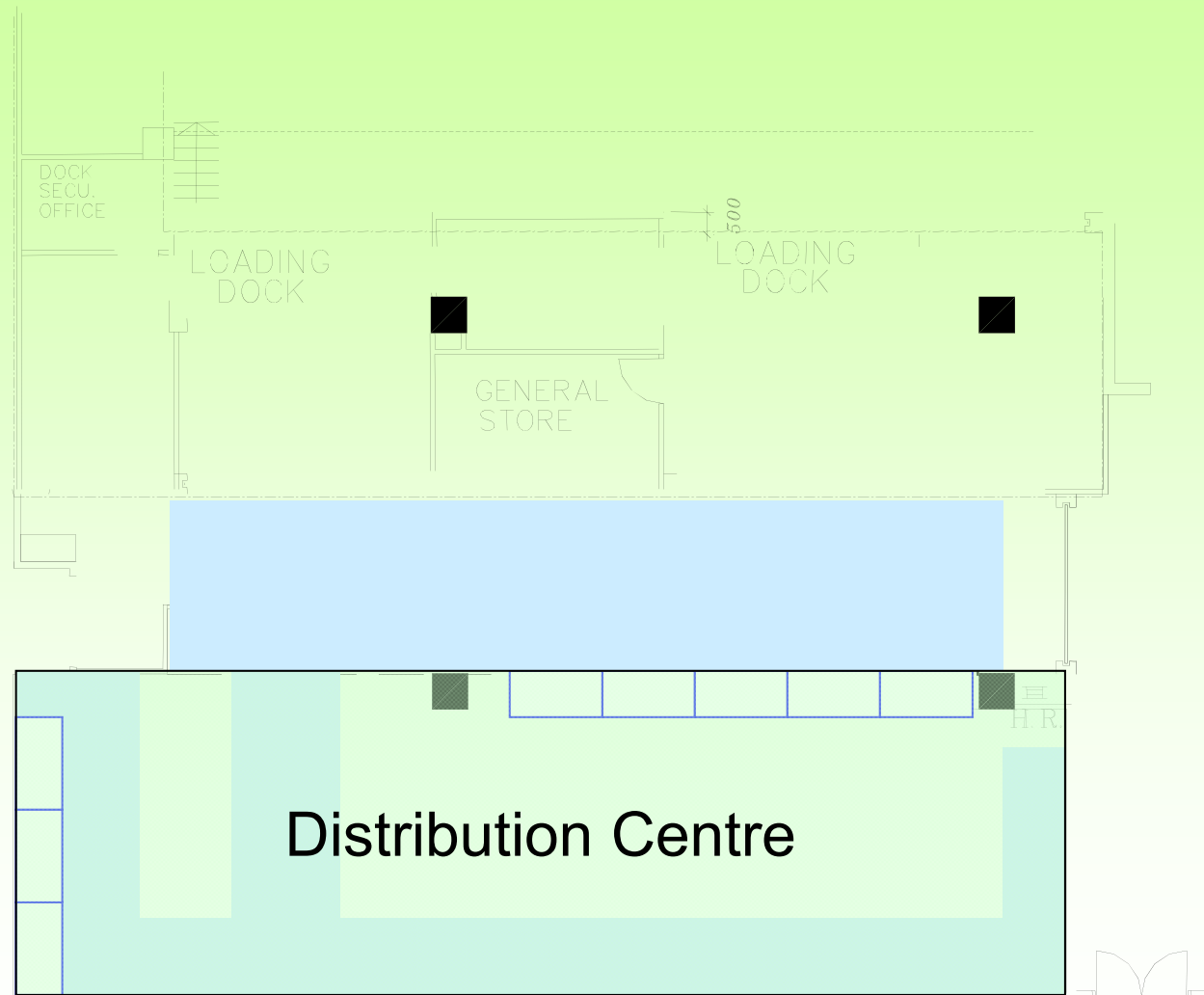
Hong Kong Delivery Assurance Center (HKG DAC)



Hong Kong Delivery Assurance Center (HKG DAC)



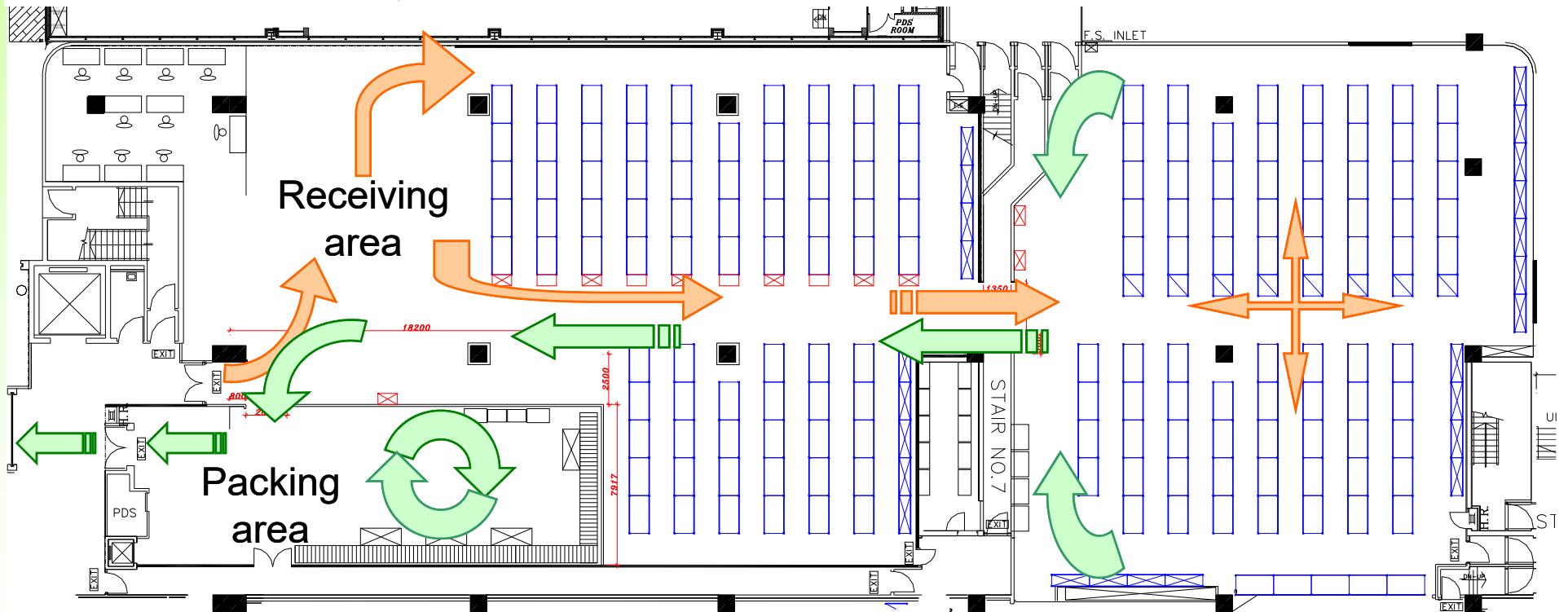
Distribution Center (D/C)



General Stock Flow in HKG DAC

Stock in flow 

Stock out flow 



Logistics Operation Flow - End Sales Shipment



Forwarders deliver cargoes to the Receiving Area

Logistics Operation Flow – End Sales Shipment



Labeling

Logistics Operation Flow – End Sales Shipment



Put the boxes onto the shelf and capture the box & location details by scanner

Logistics Operation Flow – End Sales Shipment



Upload information onto the DCLS and WWPD

Logistics Operation Flow – End Sales Shipment

```

0390-HIT ENTER TO CONTINUE INQUIRY - HIT PF11 OR PF12 TO TERMINATE
05 AUG 03          TRAK 3720 - INVENTORY BY BANK          14:34:03
  START BANK: HW10      END BANK: HW10  START ITEM: _____
  PACKAGE CODE: _____  PALCODE: _____  PROD LINE: _____
  MATL OWNER: _____  CUSTOM SRC: _____  PRINTER DEST: _____

      MATL      BULK      LOT
      BANK BANK DESC  ITEM          OWN/TYP  CS  QTY      QTY      TOTAL
-----
HW10 WWDS WHS  MC14502BCP      ATX   1  MA
HW10 WWDS WHS  MC14510BCP      ATX   1  NS
HW10 WWDS WHS  MC14510BCP      ATX   1  US
HW10 WWDS WHS  MC14512BCP      ATX   1  FR
HW10 WWDS WHS  MC14512BCP      ATX   1  GR
HW10 WWDS WHS  MC14512BCP      ATX   1  JP
HW10 WWDS WHS  MC14512BCP      ATX   1  NS
HW10 WWDS WHS  MC14513BCP      ATX   1  NS
HW10 WWDS WHS  MC14514BCL      ATX   1  MA
HW10 WWDS WHS  MC145151DW2R2   ATX   1  ML      45000     45000
HW10 WWDS WHS  MC145152DW2     ATX   1  ML         624         624
HW10 WWDS WHS  MC145152DW2R2   ATX   1  ML      4000         4000
HW10 WWDS WHS  MC14516BCP      ATX   1  NS
HW10 WWDS WHS  MC145170D2     ATX   1  TW      1296         1296
ITEM = 490  BULK =      3714616  LOT =          TOTAL =      3714616
MIPS.TRAK: PROD \HKG1  $PMP *MORE*  USER: R19778  TERM: HK-LC03  NEXT: _____
  
```

Inventory tracking and management at WWPD

Logistics Operation Flow – End Sales Shipment

```

1 - WACCIMS (192.5.254.5)
File Edit Transfer Fonts Options Tools View Window Help
REQUESTED ACTION COMPLETE
I01  GENERAL INVENTORY INQUIRY

MC145151DW2R2  ITEM NO  N TERM SELECT
                BANK NO  Y DISPLAY BANK DETAIL
                BANK GENERIC NAME      LOCATION  Y  PART CHARACTERIZATION
GROUP V      P&L VWDG      LINE CMD45151  STATUS ACTIVE
BANK
NO LOC BANK NAME  LOCATION  ON HAND  ON HOLD  ON JOB  UNMORTG  LAST
UPDATE
AT32 CP AIT FGPACK BATAM IN      969
      MO=ATX  1 CS=ML      969
HW10 TL WWDS WHS  HONG KON  45000
      MO=ATX  1 CS=ML      45000
MJ40 TL HMJIT PICK HONG KON  6000
      MO=ATX  1 CS=ML      6000
NW5H NI NRT D/S WH ATC-JAPA  1000
      MO=ATX  1 CS=ML      1000
US50 UD DAC1 SHIP  USA DAC

```

Inventory tracking and management at IMS

Logistics Operation Flow – End Sales Shipment

```

1 - Tandem_hkg2_28 (hkg2)
File Edit Transfer Fonts Options Tools View Window Help
INQUIRY COMPLETE (0004)
06 AUG 03 D221 - LOT/DEVICE LOCATION INQUIRY 08:53:26

FUNC GROUP: HKSDS_
DEVICE: MC68HRC908JK1CP_ LOT NUMBER: _____
DATE CODE SORT: Y DUAL MARKED DEVICE: _
PRINT: N QTY NEEDED: _____ PRINTER ID: _____
MFG
BIN LOT DATE DATE CODE BOX A DTL D ASM TST
LOCATION NUMBER QUANTITY CODE FROM BOX TYPE S PICKRF M CS LOC LOC
2Q0102_ BT63261DB_ 72 0322 0247_ DS P 94454H_ US ZR ZR

TOTAL QUANTITY: 72
F2 - ADDITIONAL DATA
WWPD: PROD ID: R19778 59 FGP: HKSDS TERM: HK-LC03 NEXT: _____
    
```

Pickref. no. generated

Customer Supply Analyst (CSA) allocates pick ticket based on information at WWPD

Logistics Operation Flow – End Sales Shipment



Pick up box according to pick ticket

Logistics Operation Flow – End Sales Shipment



Pick acknowledgement at Tandem and capture box information by scanner

Logistics Operation Flow – End Sales Shipment



Transfer the boxes with the pick ticket to the Packing Area

Logistics Operation Flow – End Sales Shipment



**Pack acknowledgement at Tandem and
capture box information by scanner**

Logistics Operation Flow – End Sales Shipment



**Pack the intermediate boxes with
right-sized carton box**

Logistics Operation Flow – End Sales Shipment



Transfer cartons to D/C

Logistics Operation Flow – End Sales Shipment



Shelving at D/C and capture the box & location details by scanner

Logistics Operation Flow – End Sales Shipment



Upload information onto DCLS

Logistics Operation Flow – End Sales Shipment

Pick goods (Left Screenshot)

Select shippable goods | Selected goods list

Please input pick reference or customer code to search the goods. If the goods are shippable, please click the check box in PICK field.

Pick slip: 2003080139
 Shipping reference: POD/METAO/HJ
 Cust code: []

Buttons: Reload, New slip, Search, View result, Search & Pick, Pick all, Reset all, Close

Pick ref	Cust code	Part no.	Sub qty	EPSD	LPSD	Total box	Pick
AHA6PA	AVAPX	MC145017P	1975	08/01/2003	08/08/2003	1	<input checked="" type="checkbox"/>
AG15I4	AVAPX	MC68HC705C8ACFN	988	08/06/2003	08/13/2003	1	<input checked="" type="checkbox"/>
AG46H3	AVAPX	MC68HC11D0CFN2	988	08/06/2003	08/13/2003	1	<input checked="" type="checkbox"/>
AG46H4	AVAPX	MC68HC11E1CFN2	69	08/06/2003	08/13/2003	1	<input checked="" type="checkbox"/>
AHD7C4	AVAPX	MPC740ARX233LH	1020	08/06/2003	08/13/2003	1	<input checked="" type="checkbox"/>
AHA6TM	AVAPX	DSP56303PV100	1320	08/07/2003	08/14/2003	1	<input checked="" type="checkbox"/>
AG369Q	AVAPX	MHL19338	110	08/08/2003	08/15/2003	1	<input checked="" type="checkbox"/>
AG36A1	AVAPX	MRF19085	70	08/08/2003	08/15/2003	1	<input checked="" type="checkbox"/>
AHB731	AVAPX	MC68HC908GP32CFB	2016	08/08/2003	08/15/2003	1	<input checked="" type="checkbox"/>
AG46JK	AVAPX	MC68HC11A1CFN3R2	900	08/11/2003	08/18/2003	1	<input checked="" type="checkbox"/>

Pick goods (Right Screenshot)

Select shippable goods | Selected goods list

Please check the following list, and click the confirm button if they are all right.

Pick slip no. : 2003080139 Total ticket : 12 Total box : 12

Pick ref	Cust. CD	Part no.	Qty.	Total Box	ECCN	Licence no.
AG15I4	AVAPX	MC68HC705C8ACFN	988	1	EAR99	
AG369Q	AVAPX	MHL19338	110	1	5A991	
AG36A1	AVAPX	MRF19085	70	1	EAR99	
AG46H3	AVAPX	MC68HC11D0CFN2	988	1	EAR99	
AG46H4	AVAPX	MC68HC11E1CFN2	69	1	EAR99	
AG46JK	AVAPX	MC68HC11A1CFN3R2	900	1	EAR99	
AG46JL	AVAPX	MC68HC11A1CFN3R2	450	1	EAR99	
AGY531	AVAPX	XPC8245LZU300B	264	1	5A991	
AHA6PA	AVAPX	MC145017P	1975	1	EAR99	
AHA6TM	AVAPX	DSP56303PV100	1320	1	3A991	
AHB731	AVAPX	MC68HC908GP32CFB	2016	1	EAR99	

Buttons: Print slip to office printer, Print slip to D.C. printer, Confirm the selected goods and print slip to D.C., Close

Total pcs : 10170

Shipping staff prepare shippable goods list (pick slip) at DCLS

Logistics Operation Flow – End Sales Shipment

The screenshot shows a software window titled "Edit shipper letter of instruction (Booking ref : 2003080057)". The window has four tabs: "Main", "Nature of goods and Dimensions", "Manual", and "Lineitem". The "Main" tab is active. The form is organized into several sections:

- Code section:** Cust Code: BOSUX, Forwarder: EXEL, Shipper: MHKG1
- Flight section:** Master: -, House: 823961, Flight no.: (empty), Flight date: 08/06/2003, Pay type: CP, Dest: MEL, Dest: (empty)
- Invoice section:** Invoice no: T11636, Invoice no: (empty), Invoice no: (empty), Inv. value: 0.00
- Licence section:** This shipment contains ECCN EAR99 products. Licence no: (empty), Desc code: (empty), Quantity: 0

At the bottom of the form, there are two checkboxes: Airline countersign and Add customer default. A "Next tab" button is located to the right of these checkboxes. At the very bottom of the window, there are "Save" and "Close" buttons.

Shipping staff prepare SLI at SDMS

Logistics Operation Flow – End Sales Shipment

```

Winsock 3270 Telnet - 131.197.198.6
Connect  Close  Exit  Edit  Print Screen  Setup  Help
SHIPPING ALREADY COMPLETED - CANNOT CONTINUE (0002)
05 AUG 03 WWPDP D340 - SHIPPING ACKNOWLEDGMENT 16:00:30
ACTION: I (D/I/U/S/P) CONSO CODE: FODAC1 SHIP DATE: 05 AUG 03 TAKE AWAY: 1
SHIP REF: HW8877 SHIP BANK: HW50 COMM. INVOICE: PX30679 SHIFT: _
NO. OVPS: 52 NOT CHECKED: 52 SOLD TO: SHIP TO: RESALE:
NO. CNTS: 0 NO INVOICED: 0 STAGING: 9HW50 INTRANSIT:
GROSS: 697.2 KG NET: 697.2 KG FLIGHT NBR: PO148 FINAL INV:
AIRLINE: 403 AWB: 30754651 HWB: HKG08823957 EDA: 06 AUG 03 AT: 15:45
PRT SHRPT: (SHORT/LONG/BOTH) SEND POST: PRINTER ID: PRT MODE:
ER PICKRF SO LI DLV SBJ QUANTITY
-----
REPORT ORDER: P (P/C/O)
(SORT BY PICKREF /
CUSTOMER /
OVERPACK ID )
BOX DATA: (Y/N)
INVOICE MODE: (P)
OVERRIDE
REVERSAL: N (Y/N)
PREVIOUS SCREEN PF7
WWPD: PROD ID: R7925Z 50 FGP: HKSDS TERM: HK-L208 NEXT:
NUM 16:05:43 IBM-3278-2
Clear Erase EOF New Line PA1 PA2 PA3
    
```

Shipping staff prepare invoice and packing list at Tandem

Logistics Operation Flow – End Sales Shipment

Motorola Shipment Data Management System

1. System 2. Documentation 3. Shipping operation 4. Administrator 5. Help

Add new record

SDMS reference no. Declaration Motorola

Shipping information

Hawb Mawb Flight no

Departure date Shpt. date

Details

Customer Forwarder Destination

Actual weight Charge weight Charge rate

Weight charge Other charge Type

Carton Account Date Licence

Currency Invoice amt (USD) Work week

Remark

Invoice	Product code	Source	Quantity	Value (USD)

Exit

Start | Motorola Shipment ... | Inbox - Outlook Express | My Documents | Microsoft PowerPoint - ... | 4:35 PM

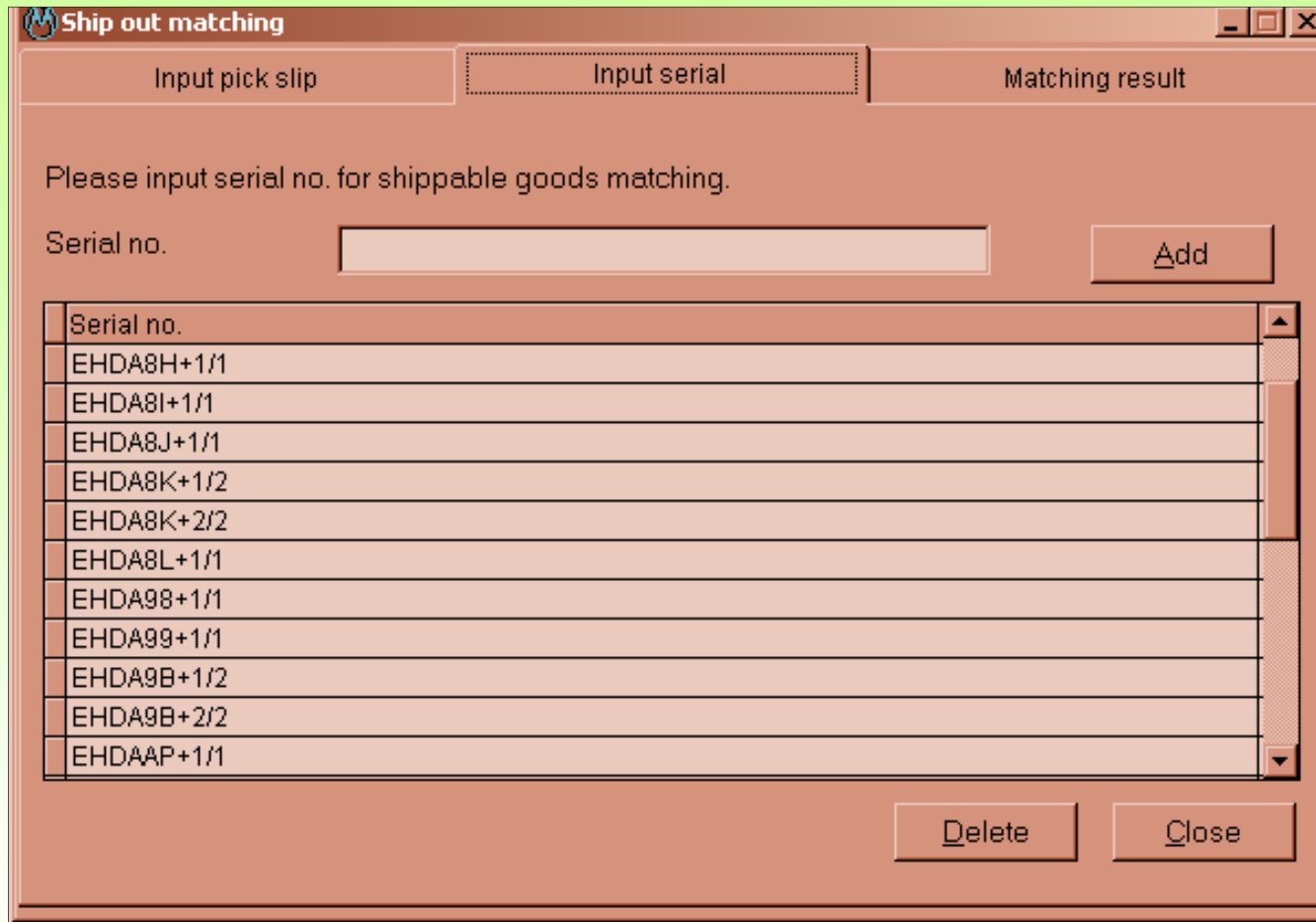
Shipping staff send pick slip to D/C and prepare the trade declaration at SDMS

Logistics Operation Flow – End Sales Shipment



D/C staff pick up shippable goods and scan the box information above

Logistics Operation Flow – End Sales Shipment



HotSync information to DCLS

Logistics Operation Flow – End Sales Shipment

Ship out matching

Input pick slip Input serial Matching result

All serial no. are match, you can deliver the goods to forwarder.

Serial no. of phy. goods	Serial no. of system picked	Cust. code	Remark
EHCA83+1/1	EHCA83+1/1	ZZABZ	O.K.
EHDA88+1/1	EHDA88+1/1	AVSGZ	O.K.
EHDA8H+1/1	EHDA8H+1/1	AVNGZ	O.K.
EHDA8I+1/1	EHDA8I+1/1	AVNGZ	O.K.
EHDA8J+1/1	EHDA8J+1/1	PDEKZ	O.K.
EHDA8K+1/2	EHDA8K+1/2	FANAZ	O.K.
EHDA8K+2/2	EHDA8K+2/2	FANAZ	O.K.
EHDA8L+1/1	EHDA8L+1/1	MSIRZ	O.K.
EHDA98+1/1	EHDA98+1/1	EWADZ	O.K.
EHDA99+1/1	EHDA99+1/1	EWADZ	O.K.
EHDA9B+1/2	EHDA9B+1/2	EWADZ	O.K.
EHDA9B+2/2	EHDA9B+2/2	EWADZ	O.K.

Match ... Close

Perform matching in DCLS

Logistics Operation Flow – End Sales Shipment



Pass cartons to forwarders

Logistics Operation Flow – Drop Shipment



**D/C staff collect shipment from the
Receiving Area to D/C**

Logistics Operation Flow – Drop Shipment



Upload information onto DCLS

Logistics Operation Flow – Drop Shipment

Please input Document ID and click "Match" button to perform drop ship matching

Document ID

Pick Ref.	Phy. Qty	Total box	Total Phy. Box	Sys. Pick Ref.	Sys. Total Qty	Remarks

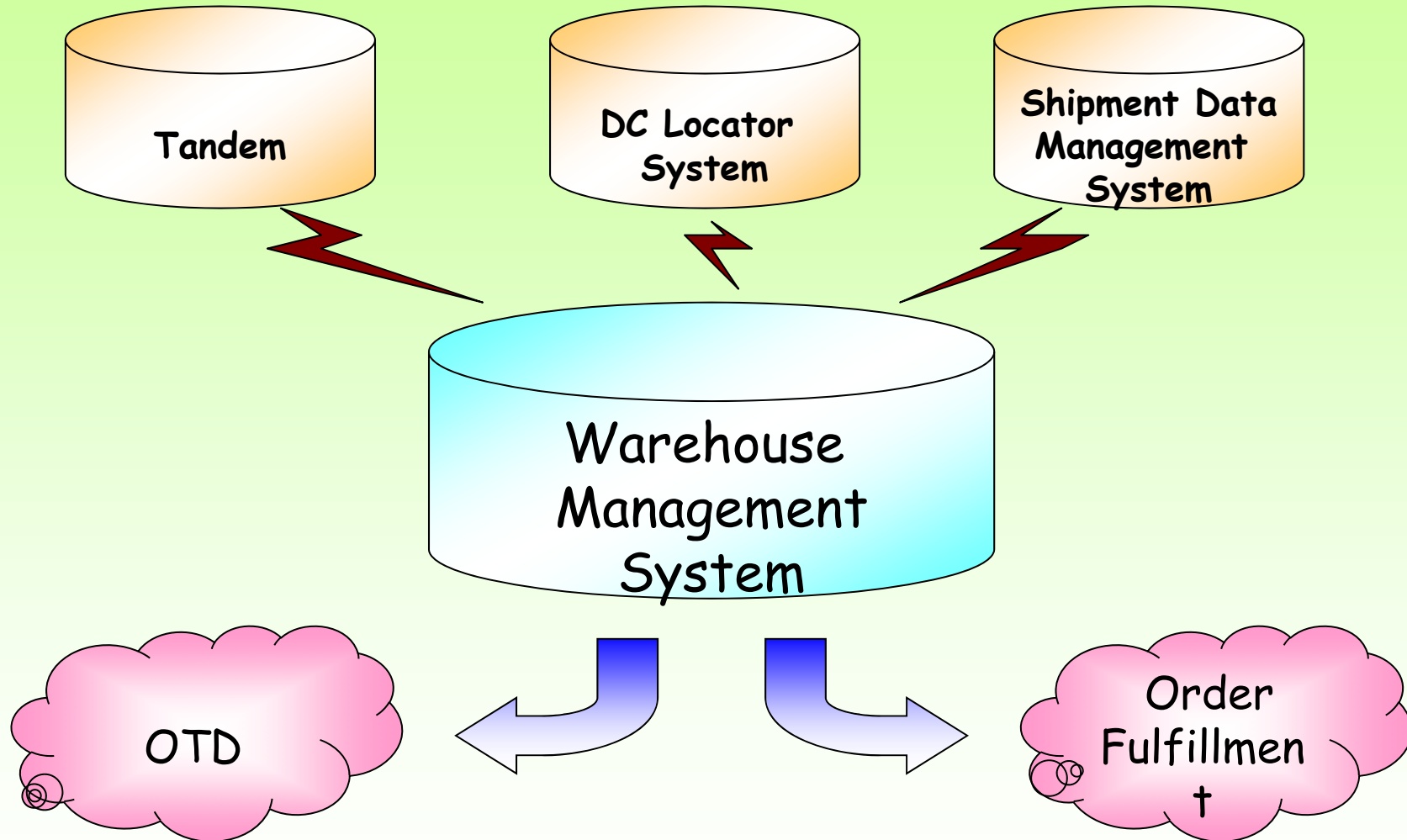
Drop ship matching in DCLS

Logistics Operation Flow – Drop Shipment



Pass drop shipment to forwarders

Logistics Operation Flow





Thank You!